

• DUCT FANS

• CIRCULAR DUCT FANS

REV 0108

CIRCULAR DUCT FANS



CIRCULAR DUCT FANS

Circular duct fans represent a technically perfect solution, uniting the advantages of axial fans (straight airflow and easy installation) with the characteristics of the radial fans (high pressure stability, low noise level and high efficiency).

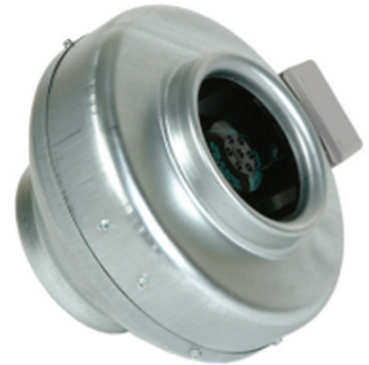
These fans are one phase (1 x 230V) and they work at 50 and 60 Hz.

Two available casings: metal and plastic casing.

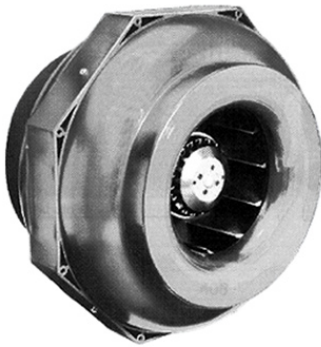
METAL CASING (STANDARD)

The casings of sizes R-100 to R-315 are manufactured of galvanized sheet steel, and the casing of R355 is made of aluminium.

Electrical construction according to VDE0530, insulation class B with additional moisture protection impregnation and thermal contacts which are connected in series with the windings of the motor. Protection Class: IP-44.



PLASTIC CASING (OPTIONAL)



These models are named RS-(duct Ø). The sizes RS-100L to RS-315L are equipped with an attractive, impact strong and hardly inflammable plastic casing with integrated IP-44 terminal box and guide vane. The impeller of the RS-315 is made of plastic. The impeller of the RS-315L is made of galvanized steel.

Electrical construction according to VDE0530, insulation class B with additional moisture protection impregnation and thermal contacts which are connected in series with the windings of the motor. Protection Class: IP-44.

[More details for Plastic Casing, Please contact with our Technical Department.](#)

Both models are 100% variable speed controllable via auto transformers or electronic control.

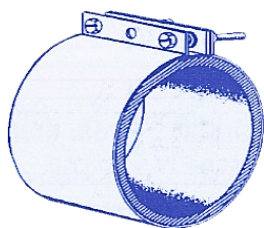
CERTIFICATES/DOCUMENTATION

Manufacturers declaration are according to:

- 89/392/EEC Machinery Directive
- 89/336/EEC EMC Directive
- 73/23/EEC Low Voltage Directive

ACCESSORIES

Clasp



Models	VBM
100	15
125	15
150	15
160	15
200	18
250	22

QUICK SELECTION TABLE

TECHNICAL DATA METAL CASING - R

► 50 Hz

Single-phase 230V

Models	Current A	Power kW	Speed rpm	Flow m³/h	Max. Pres. Δ Pa
R 100 L	0.30	0.065	2470	260	345
R 125 L	0.30	0.065	2480	310	330
R 150 L	0.47	0.11	2520	590	435
R 160 L	0.47	0.11	2500	645	440
R 200 L	0.73	0.17	2410	910	490
R 250 L	0.70	0.165	2470	990	505

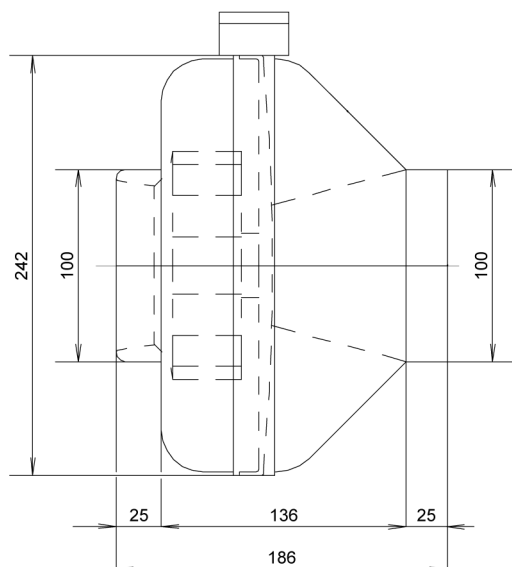
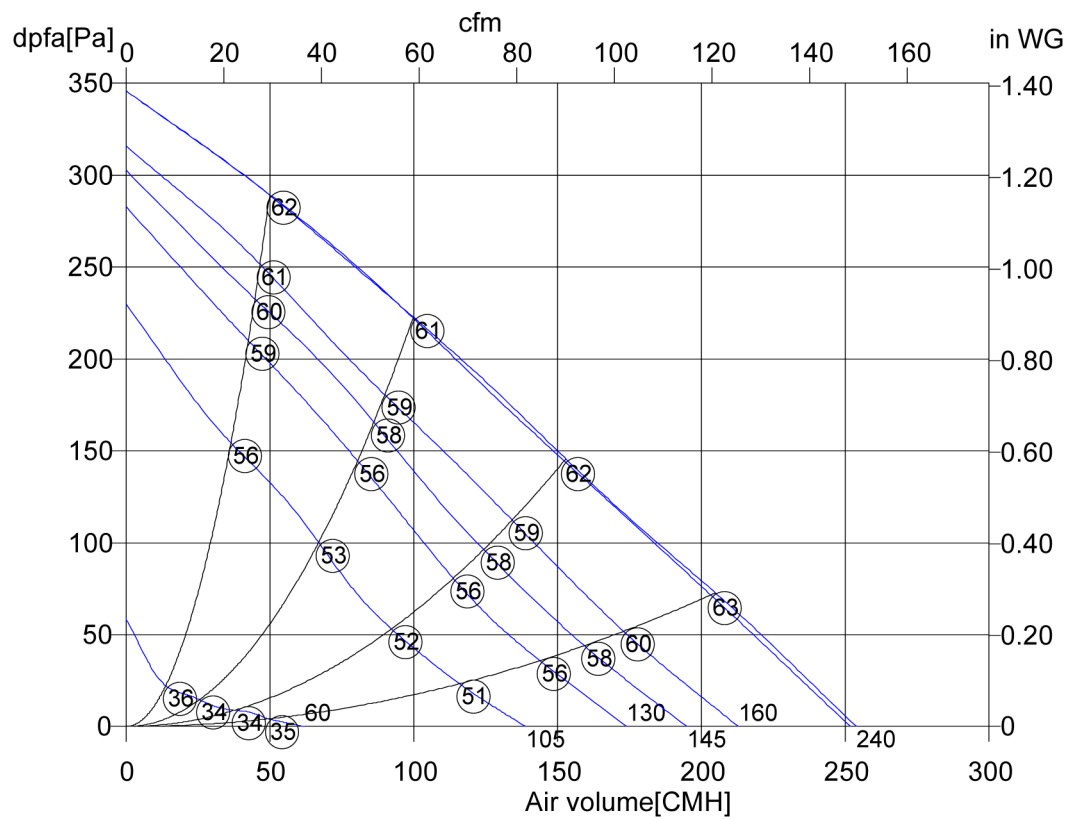
► 60 Hz

Single-phase 230V

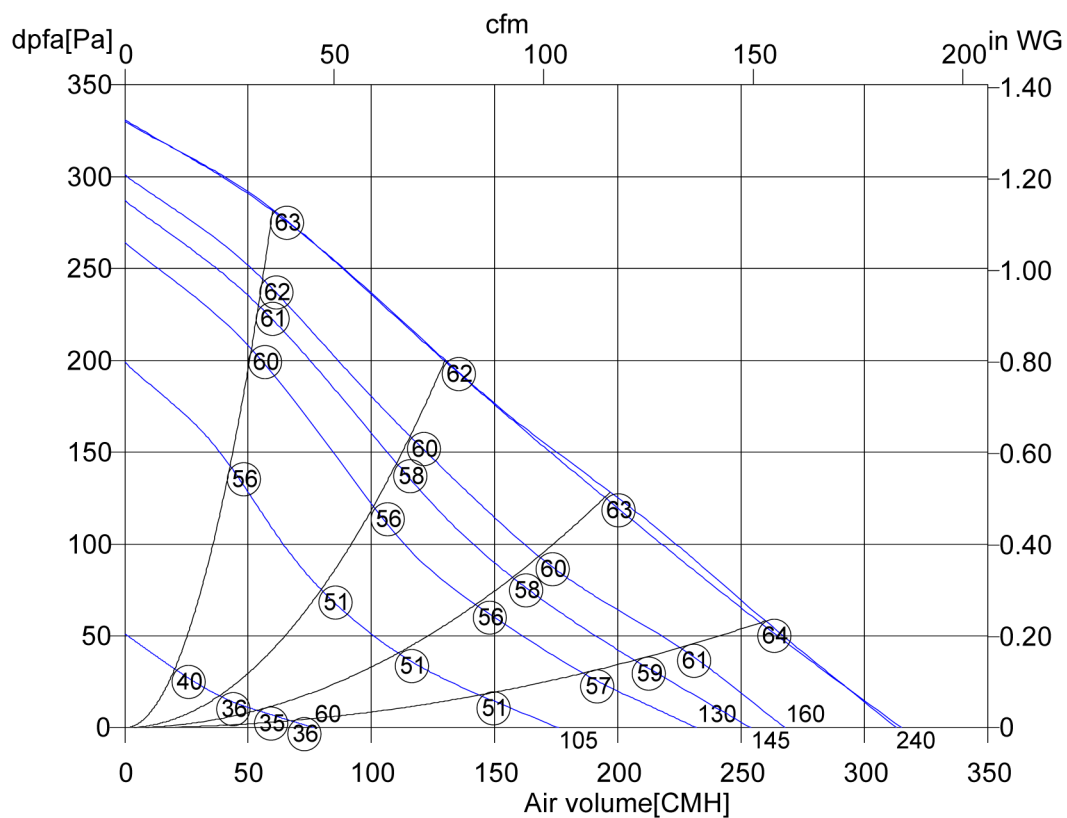
Models	Current A	Power kW	Speed rpm	Flow m³/h	Max. Pres. Δ Pa
R 100 L	0.34	0.08	2720	275	490
R 125 L	0.34	0.08	2710	345	460
R 150 L	0.63	0.14	2650	650	580
R 160 L	0.63	0.14	2638	690	560
R 200 L	0.94	0.22	2430	960	670
R 250 L	0.92	0.21	2570	1090	680

For other models, please contact with our Technical Dpt.

METAL CASING: R 100 L STAHL - 50 HZ

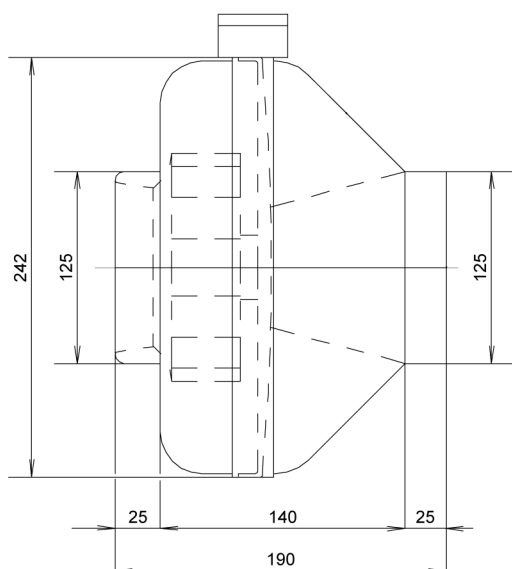


METAL CASING: R 125 L STAHL - 50 HZ

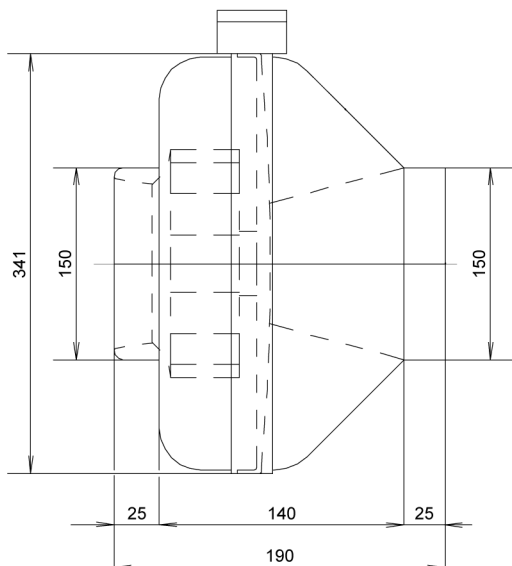
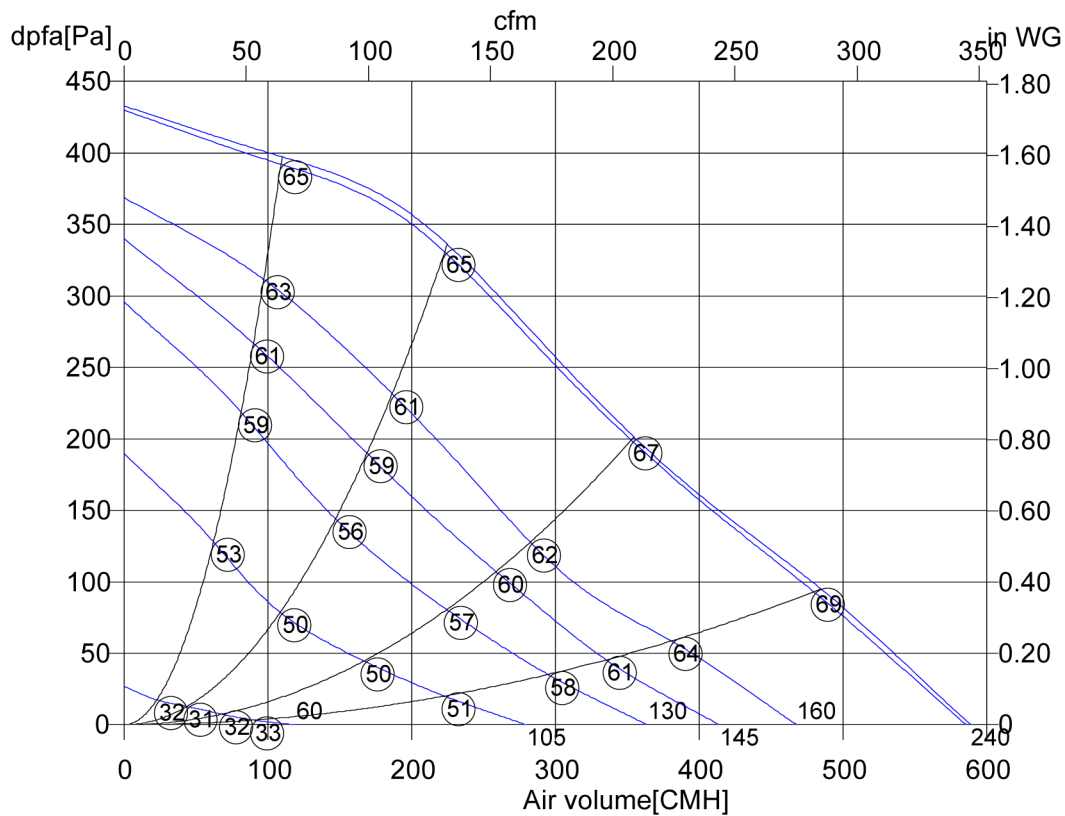


R 125 L STAHL	
Art. No.	F00-12587
U[V]	230
f[Hz]	50
P[kW]	0.065
I[A]	0.30
n[1/min]	2480
C[μF]	2
tR[°C]	70
dpst[Pa]	-
Delta I[%]	-
Ia/In	1.5
IP	44
Weight[kG]	2.6
Wir. diagr.	01.009

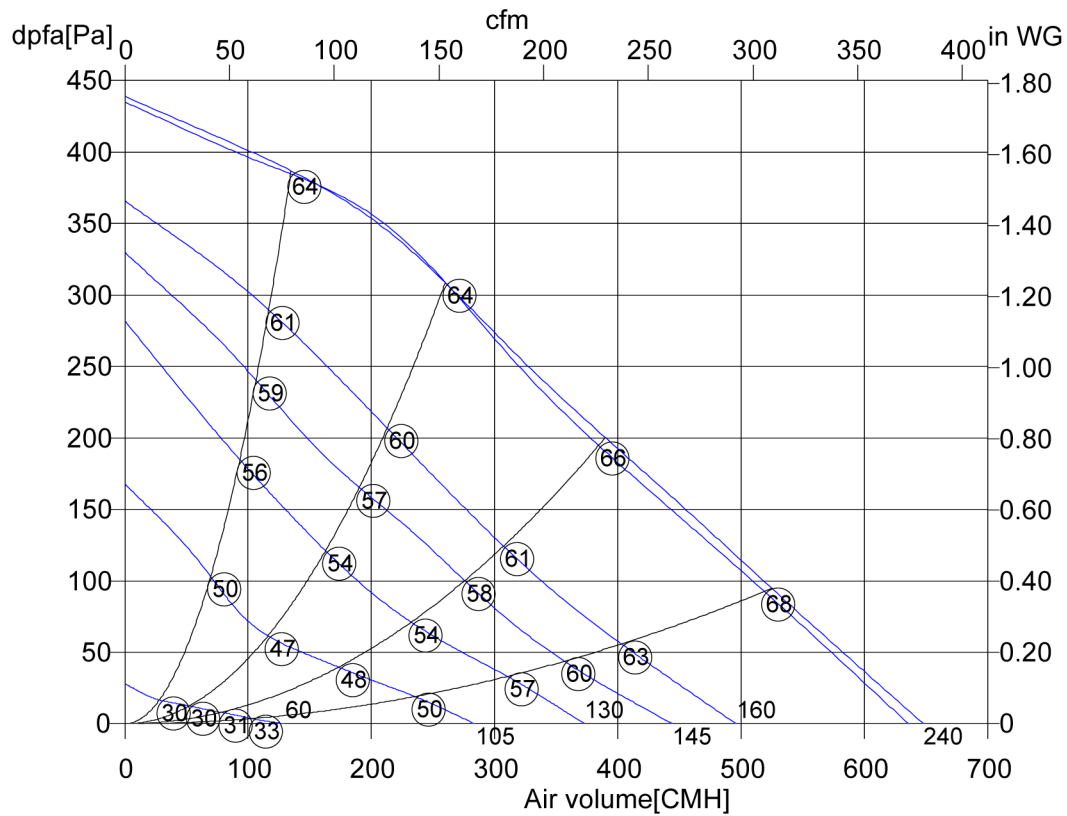
○ Sound power level
LwA6[dBA]



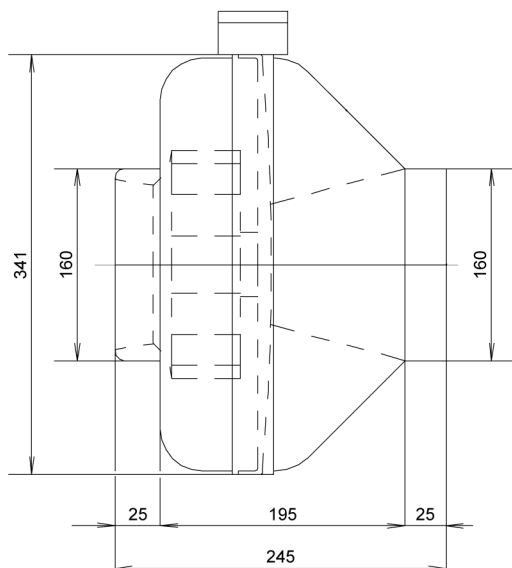
METAL CASING: R 150 L STAHL - 50 HZ



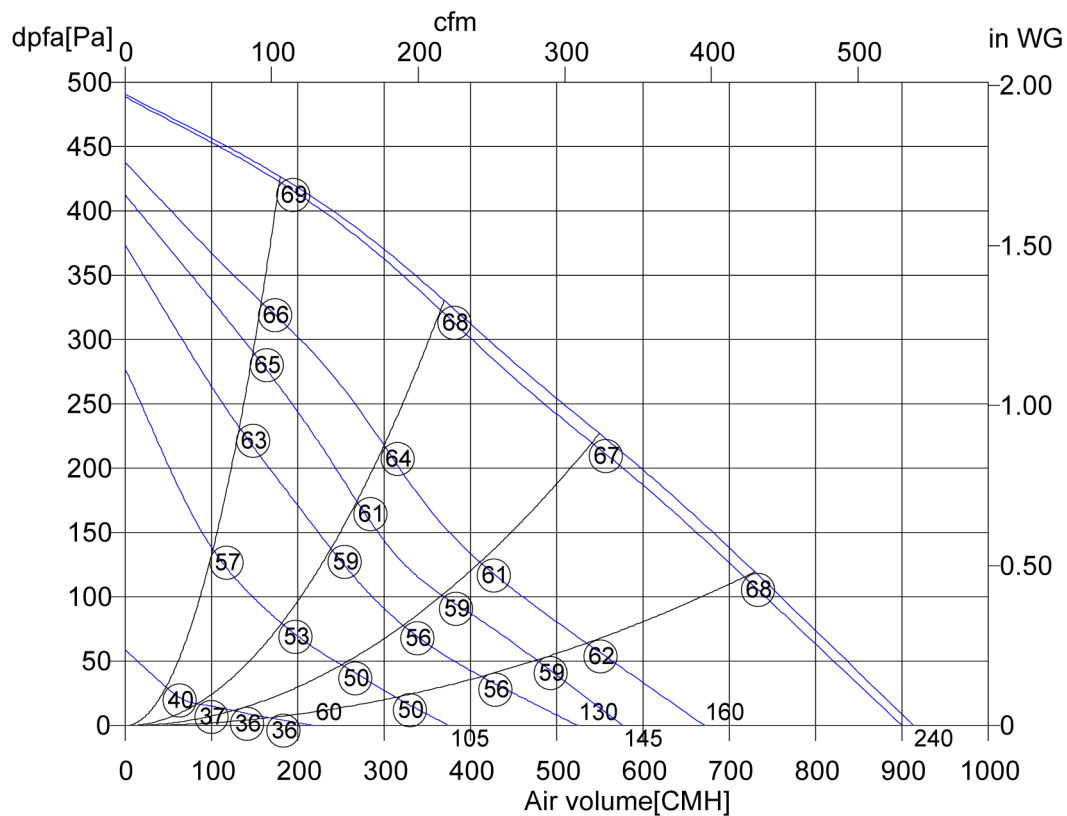
METAL CASING: R 160 L STAHL - 50 HZ



R 160 L STAHL	
Art. No.	F00-16087
U[V]	230
f[Hz]	50
P[kW]	0.11
I[A]	0.47
n[1/min]	2500
C[μF]	3
tR[°C]	60
dpst[Pa]	-
Delta I[%]	-
Ia/I _n	1.5
IP	44
Weight[kG]	3.4
Wir. diag.	01.009

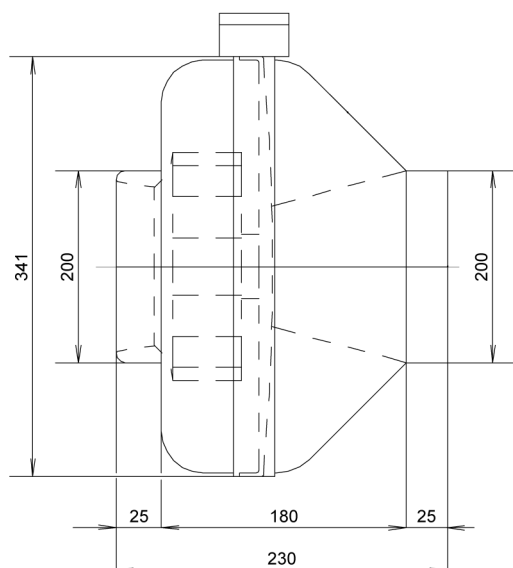


METAL CASING: R 200 L STAHL - 50 HZ

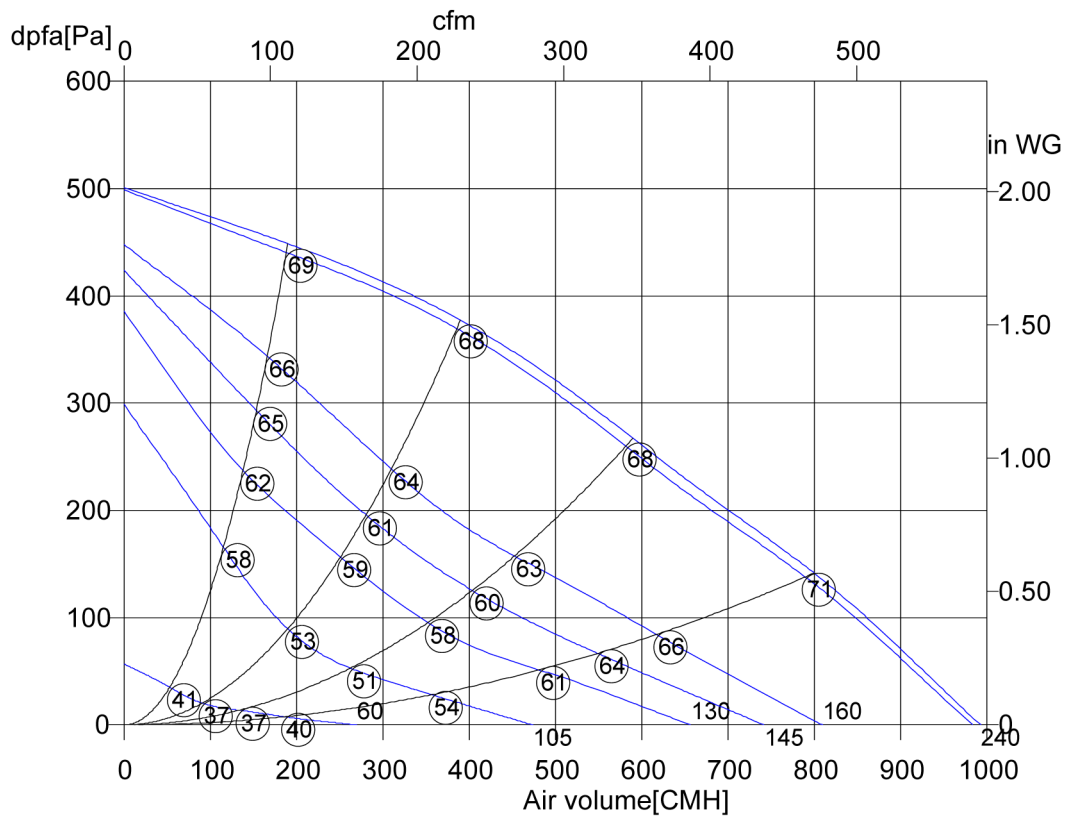


R 200 L STAHL	
Art. No.	F00-20087
U[V]	230
f[Hz]	50
P[kW]	0.17
I[A]	0.73
n[1/min]	2410
C[μF]	5
tR[°C]	65
dpst[Pa]	-
Delta I[%]	8
Ia/In	1.6
IP	44
Weight[kG]	4
Wir. diagr.	01.009

○ Sound power level
LwA6[dBA]

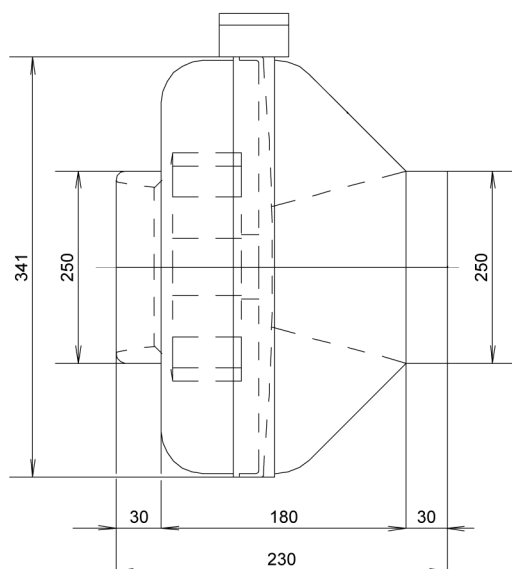


METAL CASING: R 250 L STAHL - 50 HZ

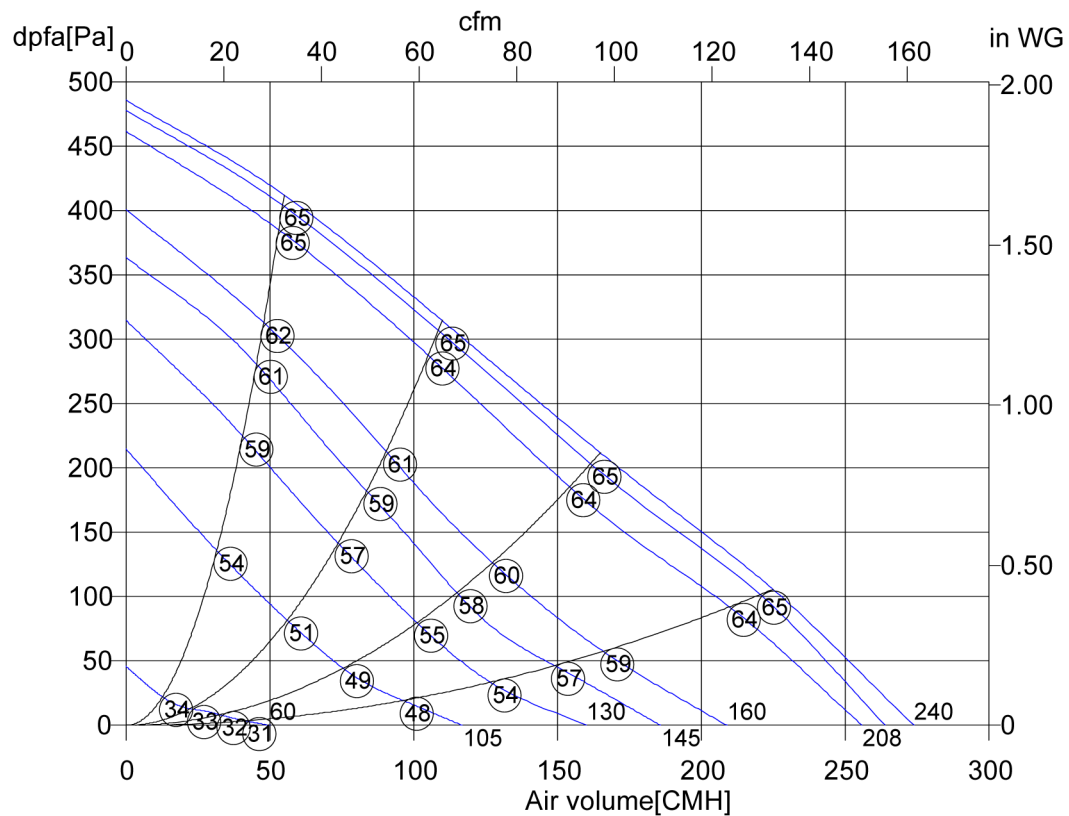


R 250 L STAHL	
Art. No.	F00-25087
U[V]	230
f[Hz]	50
P[kW]	0.165
I[A]	0.7
n[1/min]	2470
C[μF]	5
tR[°C]	60
dpst[Pa]	-
Delta I[%]	10
Ia/I _n	1.6
IP	44
Weight[kG]	5.5
Wir. diagr.	01.009

○ Sound power level
L_{wA6}[dBA]

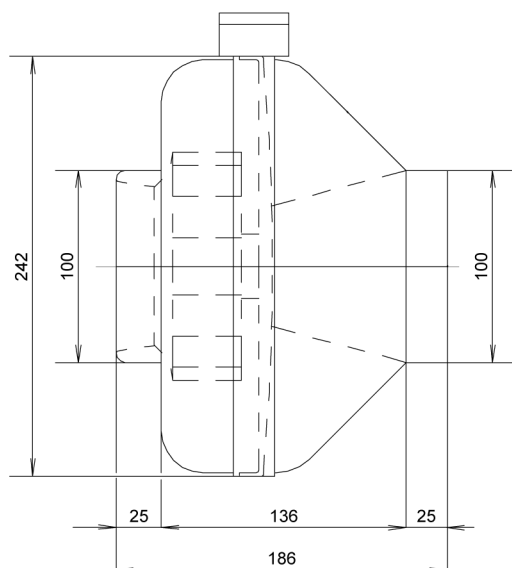


METAL CASING: R 100 L STAHL - 60 HZ

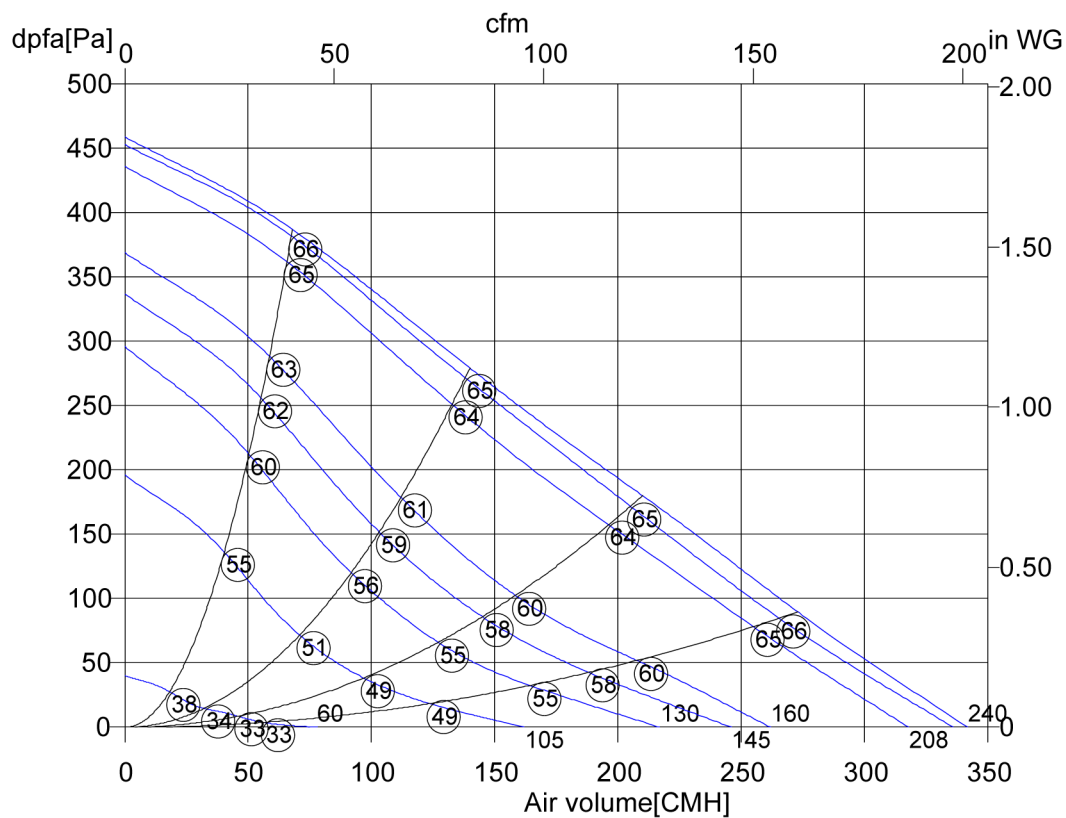


R 100 L STAHL	
Art. No.	
U[V]	230
f[Hz]	60
P[kW]	0.08
I[A]	0.34
n[1/min]	2720
C[μF]	2
tR[°C]	60
dpst[Pa]	-
Delta I[%]	-
Ia/In	1.4
IP	44
Weight[kG]	2.6
Wir. diag.	01.009

○ Sound power level
LwA6[dBA]

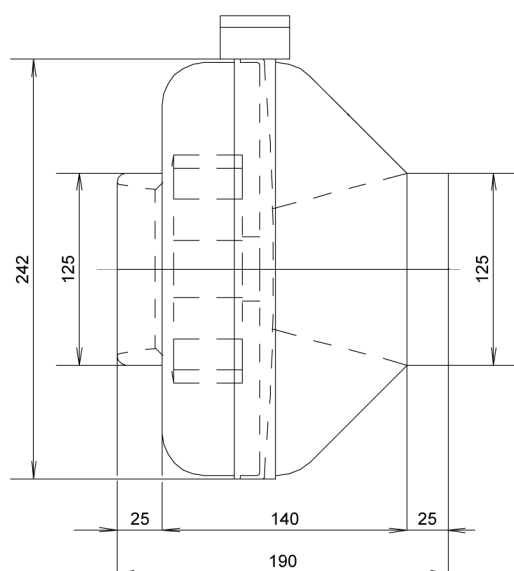


METAL CASING: R 125 L STAHL - 60 HZ

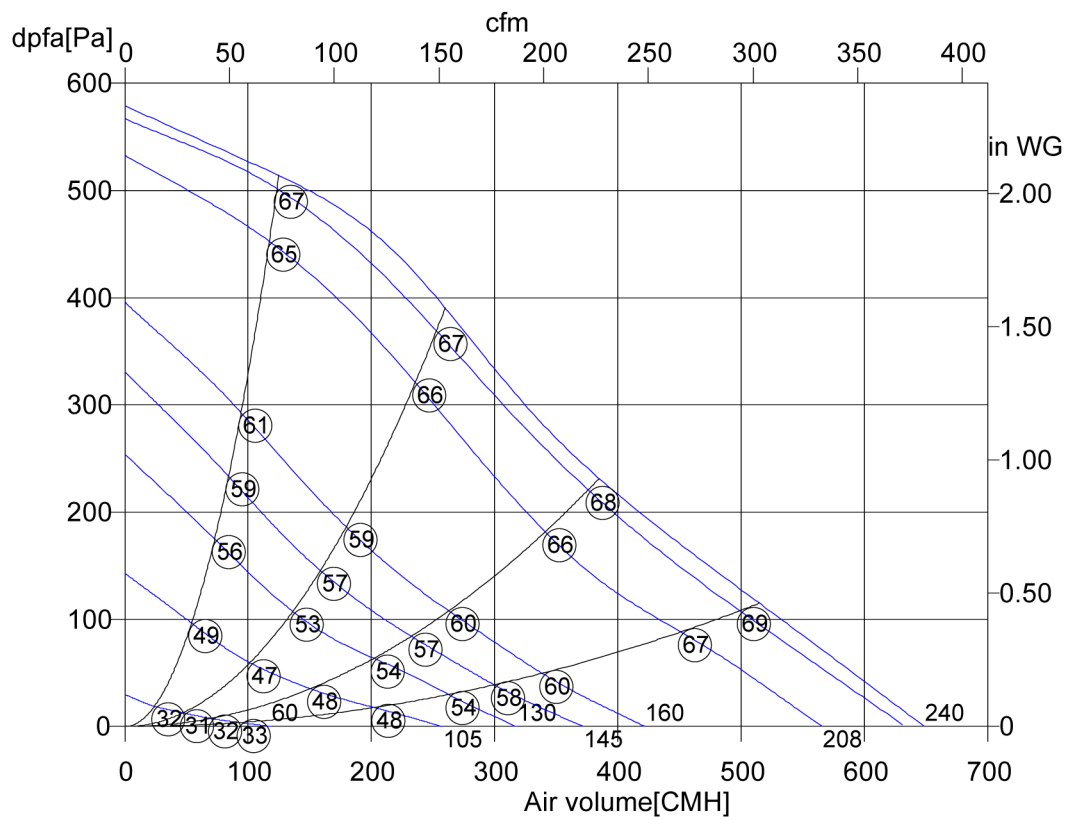


R 125 L STAHL	
Art. No.	
U[V]	230
f[Hz]	60
P[kW]	0.08
I[A]	0.34
n[1/min]	2710
C[μF]	2
tR[°C]	70
dpst[Pa]	-
Delta I[%]	-
Ia/I _n	1.5
IP	44
Weight[kG]	2.6
Wir. diag.	01.009

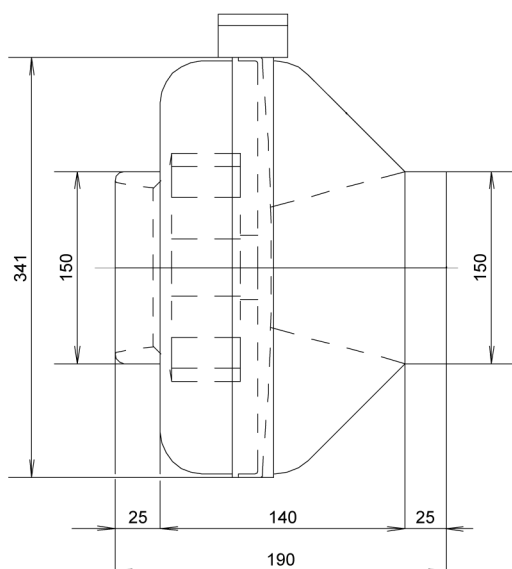
○ Sound power level
LwA6[dBA]



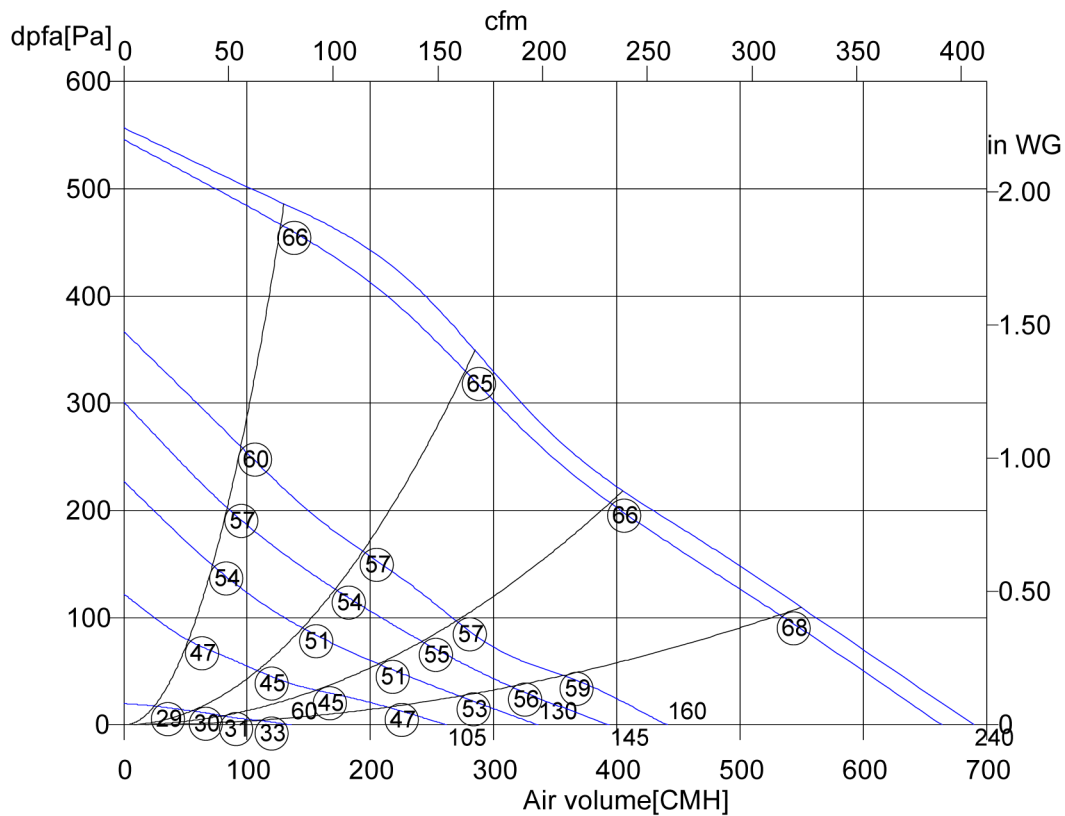
METAL CASING: R 150 L STAHL - 60 HZ



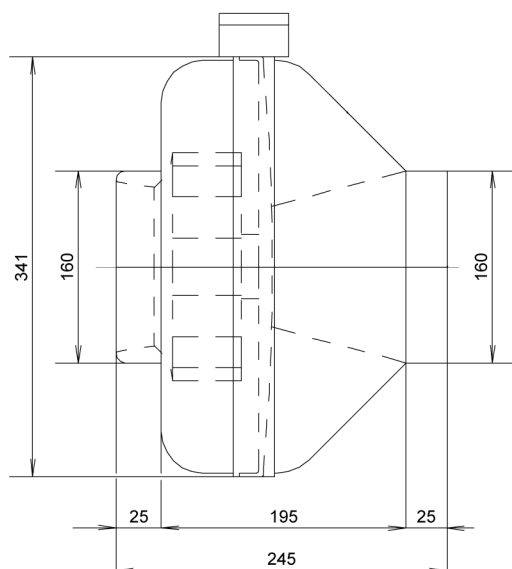
R 150 L STAHL	
Art. No.	
U[V]	230
f[Hz]	60
P[kW]	0.145
I[A]	0.63
n[1/min]	2650
C[μF]	3
tR[°C]	60
dpst[Pa]	-
Delta I[%]	-
Ia/In	1.3
IP	44
Weight[kG]	3.4
Wir. diagr.	01.009



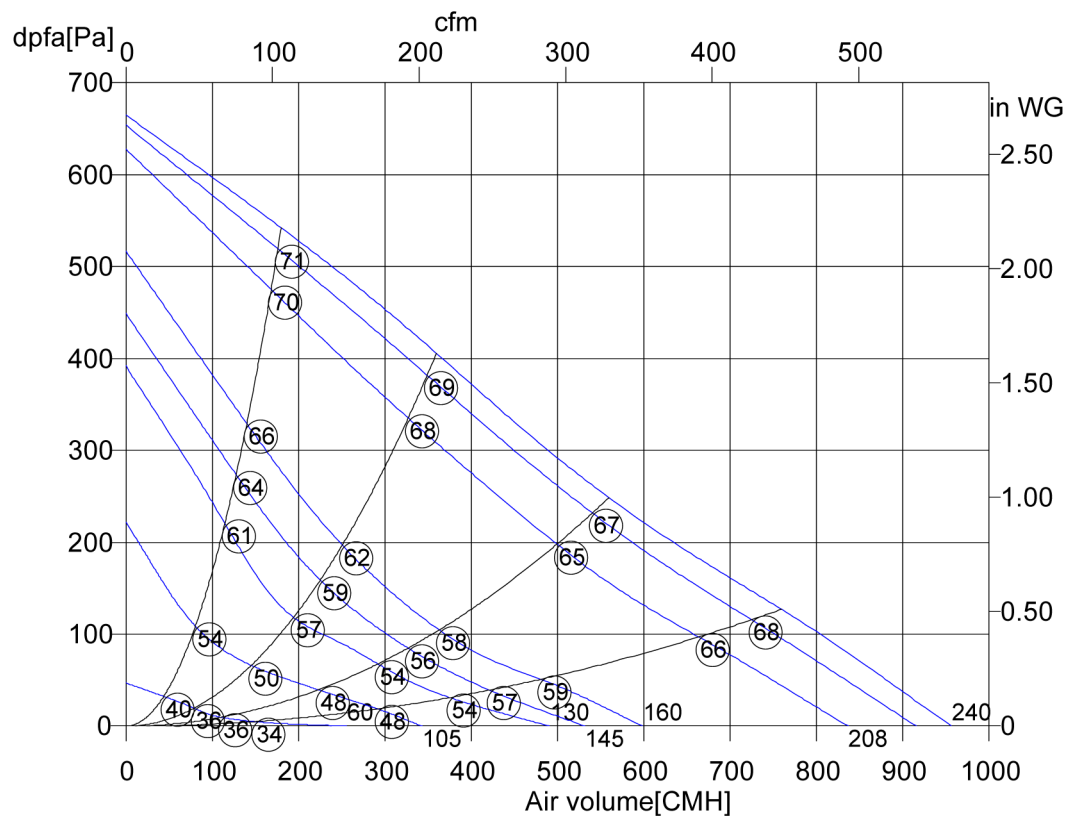
METAL CASING: R 160 L STAHL - 60 HZ



R 160 L STAHL	
Art. No.	
U[V]	230
f[Hz]	60
P[kW]	0.145
I[A]	0.63
n[1/min]	2638
C[μF]	3
tR[°C]	60
dpst[Pa]	-
Delta I[%]	-
Ia/In	1.4
IP	44
Weight[kG]	3.4
Wir. diagr.	01.009

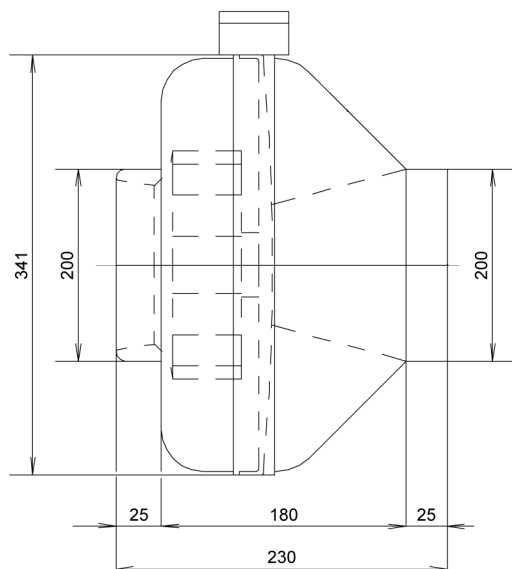


METAL CASING: R 200 L STAHL - 60 HZ



R 200 L STAHL	
Art. No.	
U[V]	230
f[Hz]	60
P[kW]	0.22
I[A]	0.94
n[1/min]	2430
C[μF]	5
tR[°C]	50
dpst[Pa]	-
Delta I[%]	-
Ia/I _n	1.2
IP	44
Weight[kG]	4
Wir. diag.	01.009

○ Sound power level
LwA6[dBA]



METAL CASING: R 250 L STAHL - 60 HZ

