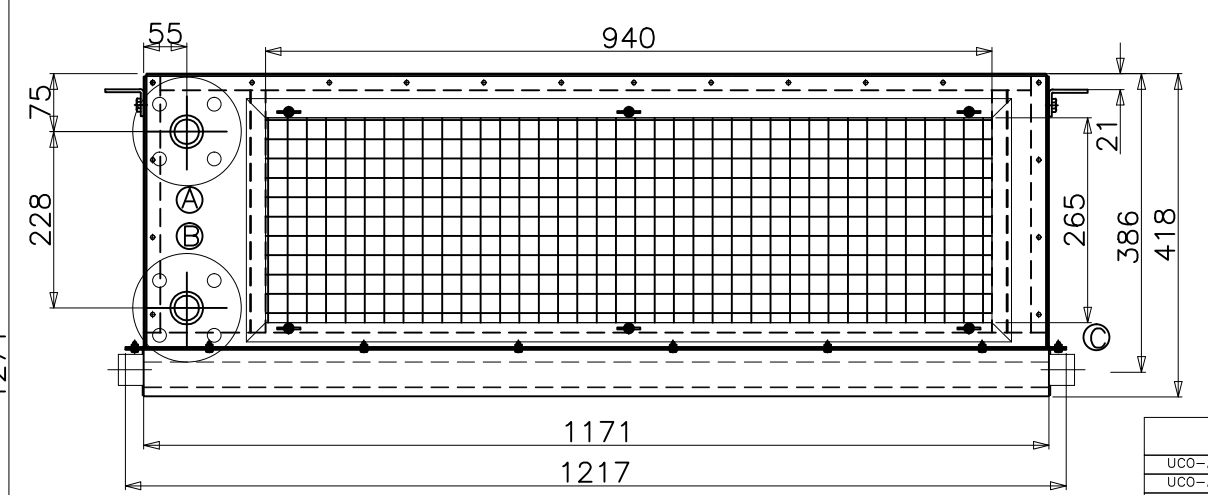
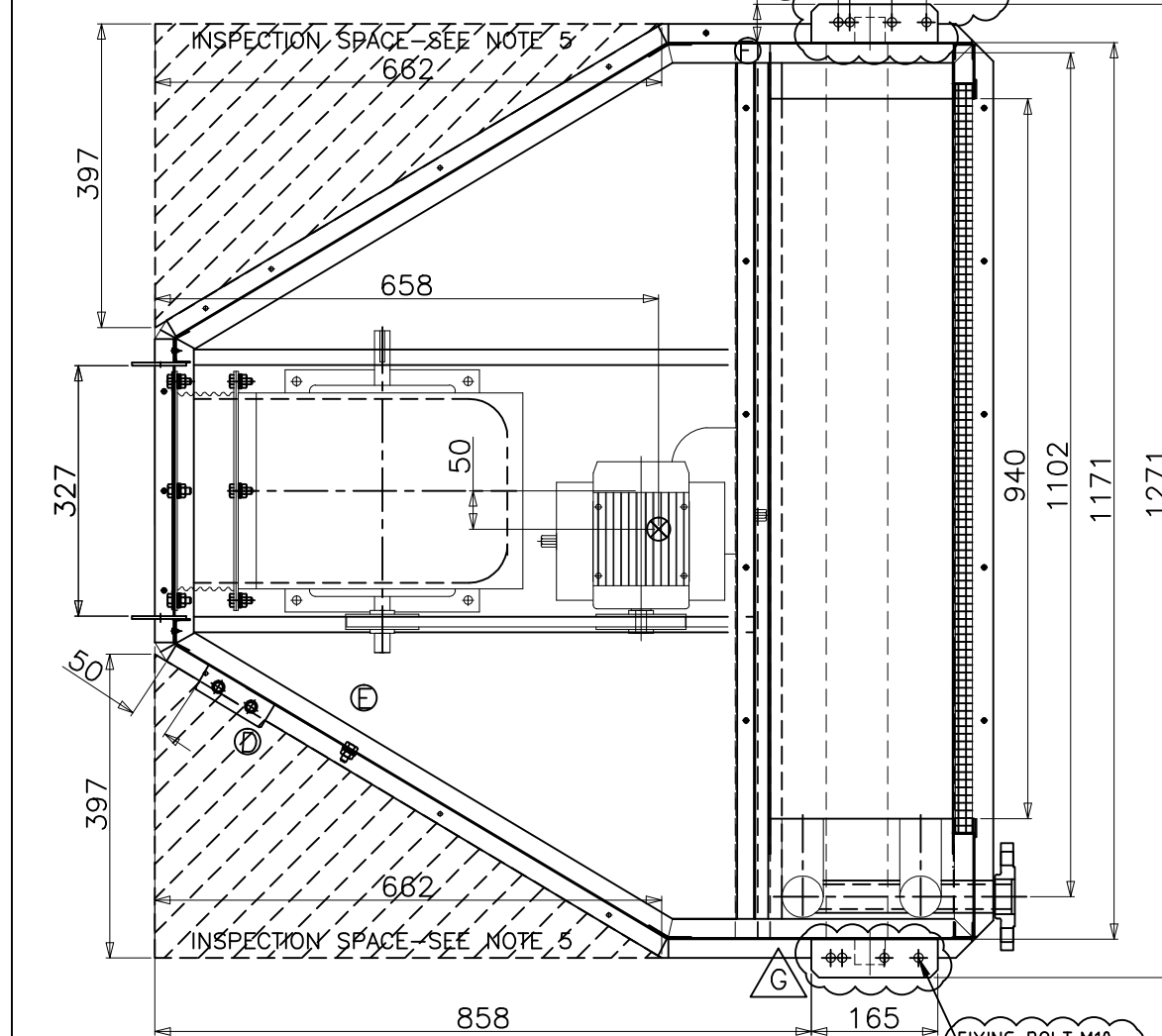


Rated Diameter	d1	Thread DIN 2999	D	b	k	h1	Neck			Screws		Weight of a flange (7,85 Kg/dm <sup>3</sup> )	
							d3	d4	f	Number	Thread		d2
32	42,4	R 1 1/4	140	16	100	26	60	78	2	4	M 16	18	1,6



TAG	TYPE	TAG	TYPE
UCO-AC001004	55 UC	UCO-AC001032	55 UC SILENT
UCO-AC001006	55 UC	UCO-AC001033	55 UC SILENT
UCO-AC002014	55 UC	UCO-AC001034	55 UC SILENT
UCO-AC002016	55 UC	UCO-AC001035	55 UC SILENT
UCO-AC001018	55 UC SILENT	UCO-AC002037	55 UC
UCO-AC002022	55 UC SILENT	UCO-AC001042	55 UC SILENT
UCO-AC001023	55 UC		
UCO-AC002025	55 UC		
UCO-AC002027	55 UC		
UCO-AC002030	55 UC		
UCO-AC002031	55 UC		

- (A) Chilled water outlet
  - (B) Chilled water inlet
  - (C) Drain
  - (D) Conn. Box 100x100x50 IP56 + 2 Cable Gland M20 for field wiring
  - (E) Grounding Screw M8
  - (F) Plate 33x17x1mm(INOX)
  - (G) Plate 40x35x1mm(GALV)
- ⊗ CENTER OF GRAVITY  
Weight: 120 Kg
- FIXING: BOLT M10 + FLAT WASHER + SAFETY WASHER + NUT (2 SETS)

- Notes:
- 1.-
  - 2.- Chilled water connections sizes: FLANGED DN32.
  - 3.- The Chilled water connections, will be with threaded flange.
  - 4.- Drain connections: 2 x Stainless steel pipe ØEXT 40mm, 1mm THICKNESS "C".
  - 5.- Recommended inspection spaces. It is mandatory to reserve one full inspection space on one side.

G	UPDATED	11/09/19	A.T.R.	A.M.F.	M.R.H
F	UPDATED	12/08/19	A.T.R.	A.M.F.	M.R.H
E	UPDATED	07/08/19	A.T.R.	A.M.F.	M.R.H
D	UPDATED	28/03/19	F.S.G.	A.M.F.	M.R.H
C	UPDATED	25/10/18	F.S.G.	A.M.F.	M.R.H
B	UPDATED	24/08/18	F.S.G.	A.M.F.	M.R.H
A	FOR INFORMATION/APPROVAL AND COMMENTS	18/07/17	F.S.G.	A.M.F.	M.R.H
O	FOR INFORMATION/APPROVAL AND COMMENTS	03/03/17	F.S.G.	A.M.F.	M.R.H
REV.	DESCRIPTION	DATE	DRAWN	VERIFIED	APPROVED

PROJECT: AVANTE 2200

DESCRIPTION: UNIT COOLERS

DRAWING NUMBER: P-M05462-002

SCALE: NTS      FORMAT: A3      SHEET: 07/12