



• SYSTEM: HVAC



ISO 9001
ISO 14001
OHSAS 18001
BUREAU VERITAS
Certification



SYSTEM: HVAC

MOTORIZED WATERTIGHT VALVES

REF.: D-MO5462-006



· SYSTEM: HVAC



ISO 9001
ISO 14001
OHSAS 18001
BUREAU VERITAS
Certification



TABLE OF CONTENTS

1. TECHNICAL AND FUNCTIONAL DESCRIPTION.....	3
--	---

ANNEX A DATA SHEET OF VALVES AND ACTUATORS	
--	--

1. TECHNICAL AND FUNCTIONAL DESCRIPTION

These valves have been designed for use in heating, ventilation and air conditioning systems. These valves are opened or closed completely by an open-close rotary actuator. Continuous rotary actuators are connected to the body valve and move it to any position desired.

Ventilation System

Each motorized control valve with the same classification of their associated fan will be operated by means of the system control cabinets, in such way they will be opened when their associated fan receives the start command, and they will be closed when their associated fan receives the stop command.

Notes:

-Motorized valves with a different classification of their associated fans and do not have a local operated panel (LOP) associated:

They will be opened when their associated fan receives the start command, and they will not be closed when their associated fan receives the stop command to avoid excessive overpressure in headquarters condition (but still not NBC, close down condition). "Open / Close" push buttons and "Local / Remote" switch are available in the local control panel (CTP).

-Motorized valves with a different classification of their associated fans and have a local operated panel (LOP) associated:

They will be opened when their associated fan receives the start command, and they will not be closed when their associated fan receives the stop command to avoid excessive overpressure in headquarters condition (but still not NBC, close down condition). In the local operated panel (LOP) "open" and "close" push buttons, and a "Local / Remote" switch are available (these operations are not available in the local control panel, CTP, associated).

- Motorized valves that are not associated to any fan. They have a local operated panel (LOP) associated:

These valves are not directly associated to any fan and a local operation panel (LOP) will be provided. In this panel "open" and "close" push buttons, and a "Local / Remote" switch are available (these operations are not available in the local control panel, CTP, associated).

Air Conditioning System

Each motorized valve will be locally controlled by means of the system control cabinets, in such way they will be opened when their associated fan coil/unit cooler receives the start command, and they will be closed when their associated fan coil/unit cooler receives the stop command.

Furthermore, they will be interlocked with their associated fan coils/unit coolers, so if a motorized valve is locally closed its associated fan coil/unit cooler will be stopped, and any other associated valve will be closed too.

ANNEX A. DATA SHEET OF VALVES AND ACTUATORS

Butterfly valve with Wafer types

- For open and closed cold and warm water systems
- For switching heat generators or cooling machines on and off


Type overview

Type	DN []	PN []	kvmax [m³/h]
D625N	25	6 / 10 / 16	45
D632N	32	6 / 10 / 16	55
D640N	40	6 / 10 / 16	70
D650N	50	6 / 10 / 16	90
D665N	65	6 / 10 / 16	180
D680N	80	6 / 10 / 16	300
D6100N	100	6 / 10 / 16	580
D6125N	125	6 / 10 / 16	820
D6150N	150	6 / 10 / 16	1600
D6200N	200	6 / 10 / 16	2900
D6250N	250	10 / 16	4400
D6300N	300	10 / 16	7300
D6350N	350	10 / 16	10900
D6400N	400	16	14200
D6450N	450	16	18800
D6500N	500	16	24100
D6600N	600	16	37300
D6700N	700	16	42800

Technical data

Functional data	Media	Cold and warm water, water with glycol up to max. 50% vol.
	Medium temperature	-20...120 °C
	Permissible pressure ps	1600 kPa
	Leakage rate	Leakage rate A, tight (EN 12266-1)
	Pipe connectors	DN 25...200: Flange PN 6/PN 10/PN16 (according to ISO 7005-2) DN 250...350: Flange PN 10 / PN 16 (according to ISO 7005-2) DN 400...700: Flange PN 16 (according to ISO 7005-2)
	Angle of rotation	90°
	Installation position	Upright to horizontal (in relation to the stem)
	Suitable connection flange	In accordance with ISO 7005-2 and EN 1092-2
	Maintenance	Maintenance-free
Materials	Housing	EN-JS1030 (GGG 40), epoxy-powder coating (RAL 5002)
	Closing element	1.4301 (stainless steel)
	Stem	1.4005 (stainless steel)
	Stem seal	O-ring EPDM
	Spindle bearing	RPTFE
	Seat	EPDM

Safety notes



- The valve has been designed for use in stationary heating, ventilation and air-conditioning systems and is not allowed to be used outside the specified field of application, especially in aircraft or in any other airborne means of transport.
- Only authorised specialists may carry out installation. All applicable legal or institutional installation regulations must be complied during installation.
- The valve does not contain any parts that can be replaced or repaired by the user.
- The valve may not be disposed of as household refuse. All locally valid regulations and requirements must be observed.
- When determining the flow rate characteristic of controlled devices, the recognised directives must be observed.
- The damper must be opened and closed slowly in order to avoid hydraulic shocks in the pipe system.

Product features

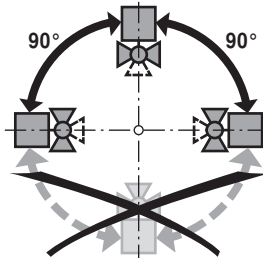
- Principle of operation** The butterfly valve is opened or closed completely by an open-close rotary actuator. Continuous rotary actuators are connected by a commercially available controller and move the valve to any position desired. The valve disk made of stainless steel is pressed into the soft-sealing EPDM seat by a rotary movement and ensures leakage rate A (tight). The pressure losses are slight in the open position and the kv value is at a maximum.
- Manual override** Manual throttling or shut-off can be carried out with a lever or a worm gear (see «Accessories»).
- With lever (DN25...150): Adjustable in 10 ratchet steps with position indication (0 = 0° (angle); 9 = 90° (angle))
 - With worm gear (DN25...700): steplessly adjustable (self-locking) with position indication.

Accessories

	Description	Type
Electrical accessories	Stem heating flange ISO 5211, F05 (30W)	ZR24-F05
	Description	Type
Mechanical accessories	Worm gear for D6.. butterfly valves, DN25...DN100	ZD6N-S100
	Manual control for D6.. butterfly valves, for DN25...DN100	ZD6N-H100
	Worm gear for D6.. butterfly valves, DN125...DN150	ZD6N-S150
	Manual control for D6.. butterfly valves, for DN125...DN150	ZD6N-H150
	Worm gear for D6.. butterfly valves, DN200	ZD6N-S200
	Worm gear for D6.. butterfly valves, DN250	ZD6N-S250
	Worm gear for D6.. butterfly valves, DN300...DN350	ZD6N-S350
	Worm gear for D6.. butterfly valves, DN400	ZD6N-S400
	Worm gear for D6.. butterfly valves, DN450	ZD6N-S450
	Worm gear for D6.. butterfly valves, DN500	ZD6N-S500
	Worm gear for D6.. butterfly valves, DN600	ZD6N-S600
	Worm gear for D6... butterfly valves, DN700	ZD6N-S700

Installation notes

Recommended installation positions The butterfly valves may be mounted upright to horizontal. The butterfly valves may not be installed in a hanging position i.e. with the spindle pointing downwards.



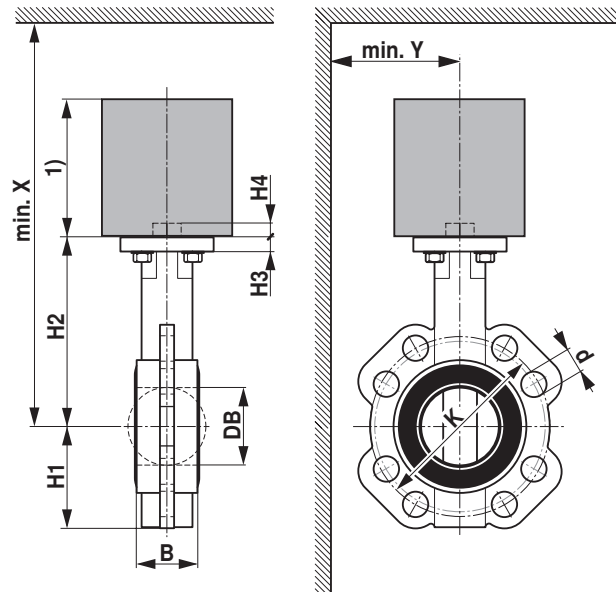
Water quality requirements The water quality requirements specified in VDI 2035 must be adhered to.

Stem heating In cold water applications and warm humid ambient air can cause condensation in the actuators. This can lead to corrosion in the gear box of the actuator and causes a breakdown of it. In such applications, the use of a stem heating is provided. The stem heating must be enabled only when the system is in operation, because it does not have temperature control.

Maintenance Butterfly valves and rotary actuators are maintenance-free. Before any kind of service work is carried out on the actuator, it is essential to isolate the rotary actuator from the power supply (by unplugging the electrical cable). Any pumps in the part of the piping system concerned must also be switched off and the appropriate slide valves closed (allow everything to cool down first if necessary and reduce the system pressure to ambient pressure level). The system must not be returned to service until the butterfly valve and the rotary actuator have been mounted properly in accordance with the instructions and the pipeline has been refilled in the proper manner. To avoid a torque increase during off season shut down, exercise the butterfly valve (full open and close) at least once a month.

Dimensions / Weight

Dimensional drawings



Type	DN []	B [mm]	DB [mm]	H1 [mm]	H2 [mm]	H3 [mm]	H4 [mm]	d (PN6) [mm]	K (PN6) [mm]
D625N	25	32	30	57	86	10	13	4 x 11	75
D632N	32	33	35	60	100	10	13	4 x 14	90
D640N	40	33	42	68	119	10	13	4 x 14	100
D650N	50	43	52	72	133	11	13	4 x 14	110
D665N	65	46	64	81	147	11	13	4 x 14	130
D680N	80	46	78	96	158	11	13	4 x 19	150
D6100N	100	52	103	106	170	11	13	4 x 19	170
D6125N	125	56	122	122	194	15	19	8 x 19	200
D6150N	150	56	155	140	202	15	19	8 x 19	225
D6200N	200	60	202	172	240	15	19	8 x 19	280
D6250N	250	68	250	206	268	15	24		
D6300N	300	78	301	244	316	15	24		
D6350N	350	78	333	267	361	15	24		
D6400N	400	102	391	308	400	20	48		
D6450N	450	114	442	337	422	22	48		
D6500N	500	127	493	359	480	22	48		
D6600N	600	154	594	454	562	25	48		
D6700N	700	165	695	505	624	33	66		

Type	d (PN10) [mm]	K (PN10) [mm]	d (PN16) [mm]	K (PN16) [mm]	X [mm]	Y [mm]	Weight approx. [kg]
D625N	4 x 14	85	4 x 14	85	320	150	1.1
D632N	4 x 19	100	4 x 19	100	340	150	1.5
D640N	4 x 19	110	4 x 19	110	350	160	1.6
D650N	4 x 19	125	4 x 19	125	370	160	2.4
D665N	4 x 19	145	4 x 19	145	380	170	3.0
D680N	8 x 19	160	8 x 19	160	390	180	3.3
D6100N	8 x 19	180	8 x 19	180	410	190	4.0
D6125N	8 x 19	210	8 x 19	210	530	210	6.7
D6150N	8 x 23	240	8 x 23	240	540	220	7.4
D6200N	8 x 23	295	12 x 23	295	580	250	12
D6250N	12 x 23	350	12 x 28	355	630	280	20
D6300N	12 x 23	400	12 x 28	410	680	310	30
D6350N	16 x 23	460	16 x 28	470	730	340	34
D6400N			4 x 31	525	1300	1300	60
D6450N			4 x 31	585	1300	1400	73
D6500N			4 x 33	650	1700	1500	98
D6600N			16 x 37	770	1800	1800	190
D6700N			20 x 37	840	1800	1900	330

Further documentation

- Overview Valve-actuator combinations
- Data sheets for actuators
- Installation instructions for actuators and/or butterfly valves
- General notes for project planning

DECLARATION OF CONFORMITY

BELIMO Automation
Brunnenbachstrasse 1
CH-8340 Hinwil / Switzerland

We declare that the products

D6..N Butterfly valves (Nominal width: DN 25 – DN 700)
D6..NL Butterfly valves (Nominal width: DN 50 – DN 700)

to which this declaration relates, are in conformity with the following directive(s), standard(s) or normative documents:

DIN EN 1563, DIN EN 12266-1, DIN 3840, DIN 17006,
DIN 17007, DIN 17440, ISO 273, ISO 2768, ISO 5211, ISO 5752,
ISO 7005-2, VDI/VDE 2176, API 598

Pipe Connection: Wafer type (D6..N)
Lug type (D6..NL)


Products: According to Pressure Equipment Directive 97/23/CE (PED) art. 3 §3

Ps	DN 25 – DN 50	DN 65 – DN 700
1600 kPa	Art. 3 §3	CE marked

Products according to PED – Article 3 §3 are NOT CE marked:

- Max. Temperature of Medium T_{\max} (medium) $\leq 110^{\circ}\text{C}$
- $P_{\text{abs}} \leq 1,5 \text{ bar}$ or
- $PS \leq 0.5 \text{ bar}$ above Atmospheric Pressure

Hinwil, June 29, 2011
(Place and date of issue)


Dieter Müller
(name and signature)

Rotary actuator for butterfly valves

- Nominal torque 650 Nm
- Nominal voltage AC 230 V
- Control Open-close, 3-point
- with 2 integrated auxiliary switches


Technical data

Electrical data	Nominal voltage	AC 230 V
	Nominal voltage frequency	50/60 Hz
	Nominal voltage range	AC 207...253 V
	Power consumption in operation	193 W
	Power consumption in operation note	incl. heating
	Power consumption for wire sizing	230 VA
	Current consumption	1 A
	Auxiliary switch	2 x SPDT, 1 x 3° / 1 x 87°
	Switching capacity auxiliary switch	1 mA...5 (3 inductive) A, DC 5 V ... AC 250 V
	Connection supply / control	Terminals 2.5 mm ² (Wire 2 x 1.5 mm ² or 1 x 2.5 mm ²)
	Parallel operation	No
Functional data	Torque motor	650 Nm
	Manual override	temporary with handwheel (non-rotating)
	Angle of rotation	90°
	Angle of rotation note	Internal limit switch, not adjustable
	Running time motor	38 s
	Duty cycle	30 % (= active time 38 s / operating time 127 s)
	Sound power level motor	70 dB(A)
	Position indication	Mechanically (integrated)
Safety	Protection class IEC/EN	I Protective earth
	Protection class auxiliary switch IEC/EN	I Protective earth
	Degree of protection IEC/EN	IP67
	EMC	CE according to 2014/30/EU
	Low voltage directive	CE according to 2014/35/EU
	Mode of operation	Type 1
	Control pollution degree	4
	Ambient temperature	-30...65°C
	Non-operating temperature	-30...80°C
	Ambient humidity	95% r.h., non-condensing
	Maintenance	Maintenance-free
Mechanical data	Connection flange	F10
Weight	Weight	22 kg
Materials	Housing material	Aluminium pressure casting

Safety notes


- This device has been designed for use in stationary heating, ventilation and air conditioning systems and must not be used outside the specified field of application, especially in aircraft or in any other airborne means of transport.
- Caution: Power supply voltage!
- Only authorised specialists may carry out installation. All applicable legal or institutional installation regulations must be complied during installation.
- The device does not contain any parts that can be replaced or repaired by the user.
- The device contains electrical and electronic components and must not be disposed of as household refuse. All locally valid regulations and requirements must be observed.

Product features

Simple direct mounting	Simple direct mounting on the butterfly valve. The mounting orientation in relation to the butterfly valve can be selected in 90° (angle) increments.
Manual override	The butterfly valve can be closed (turn clockwise) and opened (turn anticlockwise) with the handwheel. The handwheel does not move while the motor is running. The butterfly valve remains in its position as long as no voltage is applied.
Internal heating	An internal heater prevents condensation buildup.
High functional reliability	Mechanical end stops limit the actuator to -2° and 92°. The internal limit switches interrupt the voltage supply to the motor. In addition, a motor thermostat provides overload protection and interrupts the voltage supply if the actuator is used outside of the specified temperatures.
Combination valve/actuator	Refer to the valve documentation for suitable valves, their permitted medium temperatures and closing pressures.
Signalling	The integrated auxiliary switches are equipped with a gold/silver coating that permits integration both in circuits with low currents (mA range) and in ones with larger-sized currents (A range) in accordance with the specifications in the data sheet. It should be noted with this application however that the contacts can no longer be used in the milliampere range after larger currents have been applied to them, even if this has taken place only once.

Electrical installation

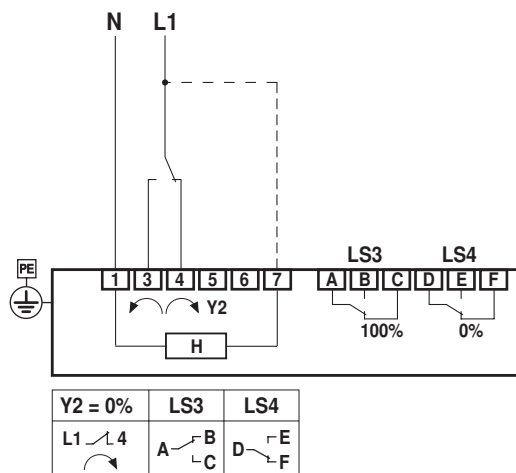


Notes

- Caution: Power supply voltage!

Wiring diagrams

AC 230 V, open-close, 3-point



H: Internal heating (no need to connect internal heating for indoor applications with constant temperature conditions)
 LS3: Auxiliary switch 100% (butterfly valve open)
 LS4: Auxiliary switch 0% (butterfly valve closed)

Settings**Notes**

- Limit switches TC1/TC2 and angle of rotation limitation are provided with sealing varnish and may not be adjusted.

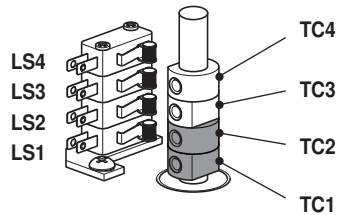
Setting cam

The setting cams for limit and auxiliary switches can be accessed by removing the housing cover.

Optionally, auxiliary switches LS4 / LS3 can be connected for signalling.

Limit switches LS2 / LS1 interrupt the voltage to the motor and are controlled by setting cams TC..

The setting cams turn with the stem. The butterfly valve closes when the stem is turning clockwise (cw) and opens when the stem is turning counterclockwise (ccw).



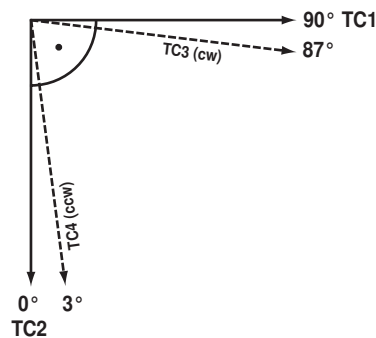
TC1/TC2 with sealing varnish: limit switches are secured against adjustment

Settings of setting cams TC..

- TC4 for auxiliary switch position closed (factory setting 3°).
- TC3 for auxiliary switch position open (factory setting 87°).
- TC2 for limit switch closed (0°).
- TC1 for limit switch open (90°).

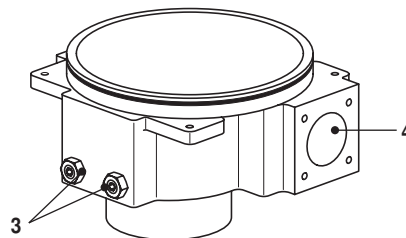
Adjusting setting cams

- 1) Use a 2.5 mm Allen key to unscrew the corresponding setting cams TC..
- 2) Turn the setting cam using the Allen key
- 3) Set as shown in the illustration below
- 4) Use the Allen key to tighten the corresponding setting cams

**Mechanical angle of rotation limitation**

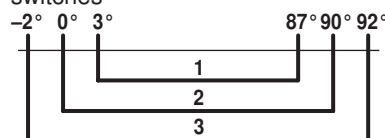
The mechanical angle of rotation (3) is set at the factory to -2° and 92° and cannot be changed.

The handwheel is rotated by means of a worm gear in a planetary gear unit. The gearing is stopped mechanically by means of two setscrews (3).



- 3: Angle of rotation limitation with sealing varnish:
Must not be adjusted
4: Connection handwheel

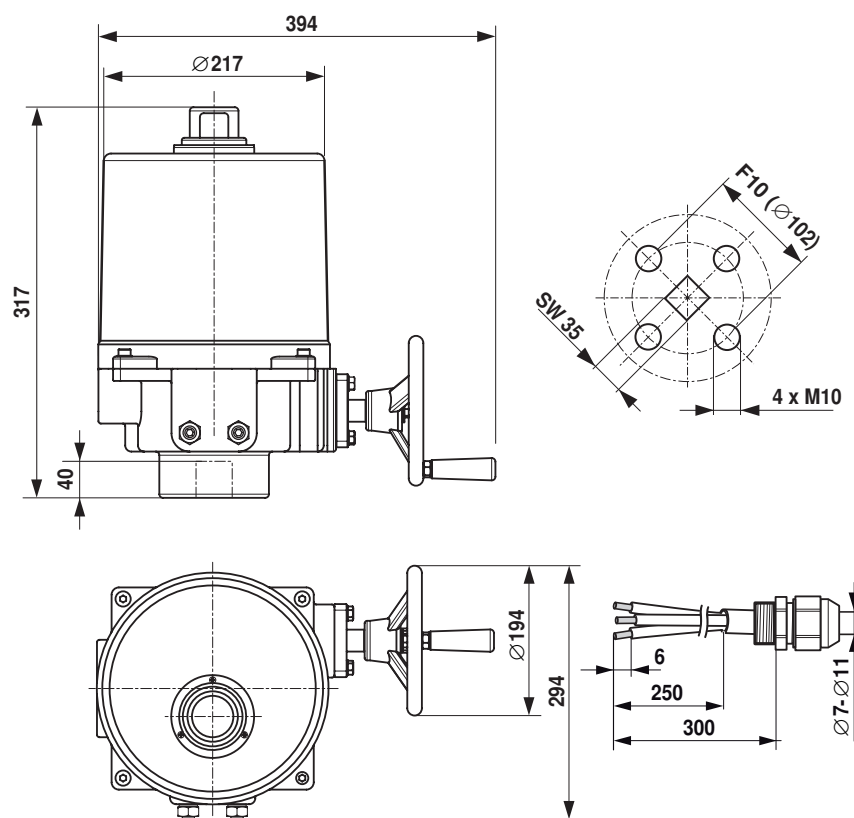
Relationship between mechanical angle of rotation limitation, limit and auxiliary switches



- 1: Auxiliary switch adjustable TC3 / TC4
2: Limit switch fix adjusted TC1 / TC2
3: Mechanical angle of rotation fix adjusted

Dimensions [mm]

Dimensional drawings



Further documentation

- Data sheets for butterfly valves
- Installation instructions for actuators and/or butterfly valves
- Notes for project planning for butterfly valves